



## Specifications

# Hangle<sup>©</sup>

## A GPS Data Handling Utility



### Key Features

- Upload / Download Data to / from Garmin GPS60 & GPS72 Handheld GPS Receivers
- Create Polylines and Polygons from Waypoints & Tracks stored in the Field
- Import / Export in Multiple GIS & CAD data formats – MIF, SHP, DXF
- Import / Export in Garmin GPX Format
- Import / Export in TXT and CSV formats
- Export Points, Lines and Areas to Google Earth
- Export Points to MapQuest
- Convert coordinates to / from Irish Grid, ITM, Lat/Long, UTM, MGRS & UK and Slovakian Grids
- Create mini Data Dictionaries to convert abbreviations used in the Field to full attribute names.

**MIF, SHP, DXF, TXT, CSV,  
GPX, NMEA, KML, HTML**

**Irish Grid, ITM, UTM, MGRS,  
Lat/Long, UK Grid,  
Slovakian Grid**

**Hangle<sup>©</sup> has been designed by GPS Ireland to allow professional users get more from Handheld GPS Receivers. It is the result of 10 years experience supporting users of these receivers....**

### GIS, CAD, Google Earth, MapQuest Support

Hangle will Import MIF, SHP, DXF, CSV, TXT and Garmin GPX data for upload to the GPS and will also export in these formats plus Google Earth, MapQuest and NMEA

### Capturing Lines & Areas

Most Handheld GPS receivers do not support the capture of Lines (Polylines) or Areas (Polygons) in an accurate way. The most accurate way is to store waypoints on the receiver and convert them afterwards. Hangle allows easy conversion of Waypoints to Polylines and Polygons with a length and area calculation displayed once created.

### Mini Data Dictionaries

Use abbreviations in the field to indicate the start or end of features and to define feature names and attributes and Hangle will do the interpretation and conversion when data is downloaded. Just fill out the abbreviation table in Hangle to match what was used in the field.

### Coordinates Systems

Hangle will import and export in multiple coordinate systems and can be used just to convert between one and the other even if no GPS is being used. The software also handles the new Irish Grid System – ITM and has UTM, UK Grid, Irish Grid, Lat/Long, MGRS and Slovakian Grid.

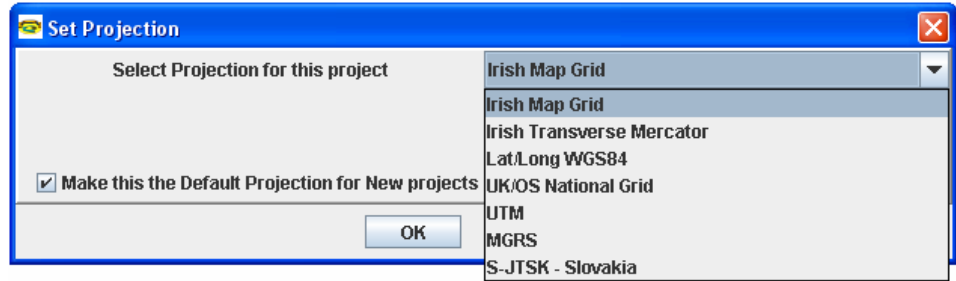
### Operating Systems Supported

Windows 2000, XP & Vista

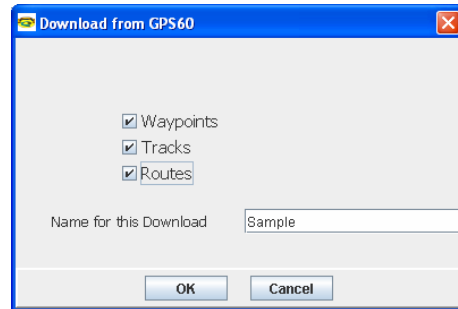
A Demo Version of Hangle is Downloadable Free Of Charge from [www.gpsireland.ie](http://www.gpsireland.ie). Hangle is activated for full use by an activation number provided by GPS Ireland. For further information Contact:

**GPS Ireland Consultants Ltd, Cork, Ireland, PONC: W5K 59VN  
Tel: + 353 21 4832990 or E-Mail: [info@gpsireland.ie](mailto:info@gpsireland.ie)**

Hangle allows users to select from a number of different **projections**, specifically for Ireland Irish Map Grid, the new Irish Transverse Mercator and Latitude/Longitude WGS 84 are included.



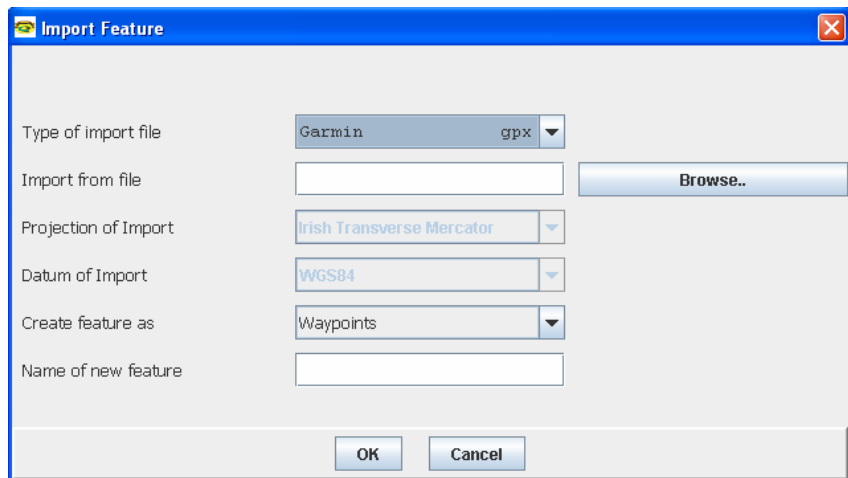
Hangle can be used in conjunction with **Garmin GPS 60 and GPS 72** for direct **download** or **upload** from and to the unit.



Even though other models cannot be connected directly, data downloaded from any Garmin unit using MapSource and saved in **gpx. file format** can be easily imported into Hangle.

Hangle also offers the capability to **import other data formats** (like SHP, DXF, MIF, CSV,...) commonly used in surveying and GIS field.

Garmin	gpx	▼
Tab delimited	txt	
Comma delimited	csv	
NMEA-GGA	txt	
ESRI shapefile	shp	
MapInfo	mif	
Garmin	gpx	
Autocad	dxif	



Tab delimited	txt	▼
Comma delimited	csv	▲
NMEA-GGA	txt	
ESRI shapefile	shp	
MapInfo	mif	
Autocad	dxif	
Google Earth	kml	
MapQuest	htm	
Garmin	gpx	▼

Export your data from Hangle in any format suitable – offered **export formats** are designed to satisfy both professional and leisure GPS users to allow transporting data into any often used surveying, GIS or web-mapping applications for further use.

A Demo Version of Hangle is Downloadable Free Of Charge from [www.gpsireland.ie](http://www.gpsireland.ie). Hangle is activated for full use by an activation number provided by GPS Ireland. For further information Contact:

**GPS Ireland Consultants Ltd, Cork, Ireland, PONC: W5K 59VN**  
**Tel: + 353 21 4832990 or E-Mail: [info@gpsireland.ie](mailto:info@gpsireland.ie)**